



DESCRIPTION AND APPLICATIONS

Agrowall self-supporting panel is made of one profiled steel sheet on the exterior face, and a polyester sheet on the interior face with a rigid polyurethane foam core, with high thermal insulation quality.

Designed for wall cladding in farms(except for Pig farms where we recommend installing our SPM product).

The maximum advisable length is 8.000 mm with a useful width of 1.000 mm.

PRODUCT CERTIFICATION

Certificate of conformity.

ADVANTAGES

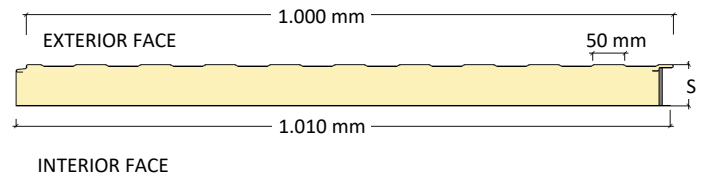
Specially designed for farm use thanks to its inner polyester layer highly resistant to the attack of microorganisms, bacteria, the vapors and condensation of organic acids present in this type of buildings.

FIRE REACTION

Classification F meeting UNE- EN 13501-1:2007 +A1:2010 specifications. Free of CFC.

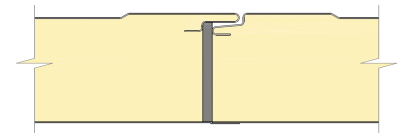
PRODUCT CHARACTERISTICS

PANEL SECTION

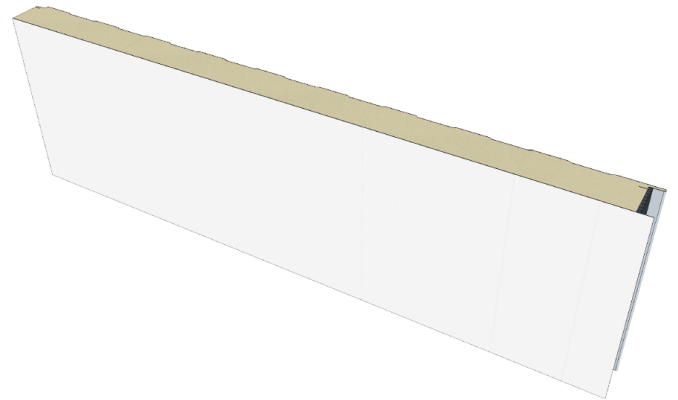


PANEL JOINT

Visible fixing



3D ESTRUCTURE



THICKNESS (mm)	WEIGHT (kg/m ²)	THERMAL TRANSMITTANCE U (W/m ² K)	
		U with JOINT FACTOR	U without JOINT FACTOR
30	4,45	-	0,67
40	4,85	-	0,52
50	5,26	0,54	0,42
	0,50+P		
30	5,62	-	0,67
40	6,02	-	0,52
50	6,43	0,54	0,42